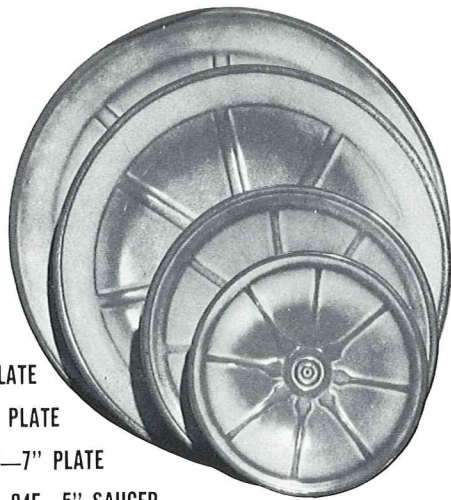




167—3½" MINIATURE HORSESHOE
2.50



5.00—94FL—10" PLATE

3.50—94F—9" PLATE

3.00—94G—7" PLATE

2.50—94E—5" SAUCER



94M—16 OZ. MUG
4.00



*243—BONE DISH—6½"
2.50



94H—SALT & PEPPER
4.25



244—INDIVIDUAL VEGETABLE BOWL
2.50



94XL—20 OZ. BOWL
3.50



94X—14 OZ. CEREAL
3.00



8.50—94V—2 QT. BAKER/BEAN POT
15.00—94V/W—BAKER W/WARMER SET



94B—SUGAR WITH LID
4.50



94A—8 OZ. CREAMER
94AB—CREAM & SUGAR SET—7.00



94C—5 OZ. CUP
3.00



94L—12 OZ. TUMBLER
3.50



94XO—6 OZ. DESSERT
2.50



94QD—13" DIVIDED BOWL—7.00



12.00—94W—3 QT BAKER/BEAN POT
18.50—94W/W—BAKER/W WARMER SET



94Q—13" PLATTER—7.00



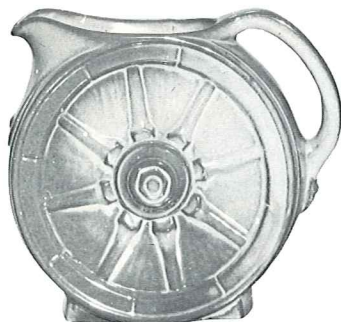
94N—1 QT. VEGETABLE BOWL
4.25



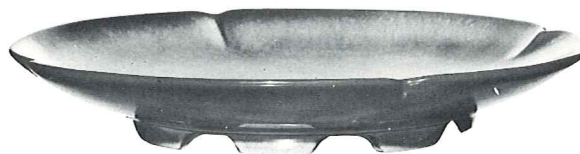
94P—17" PLATTER
15.00



94J—2 CUP TEAPOT
6.00



94D—2 QT. PITCHER
8.50



5FC—15" CHOP PLATE
20.00



242
CORN DISH
2.50